

16th Annual Conference of the
National HIV Nurses Association (NHIVNA)



National HIV Nurses Association

Anna Bamford

Sussex Community NHS Trust, Brighton

26-27 June 2014- City Hall, Cardiff

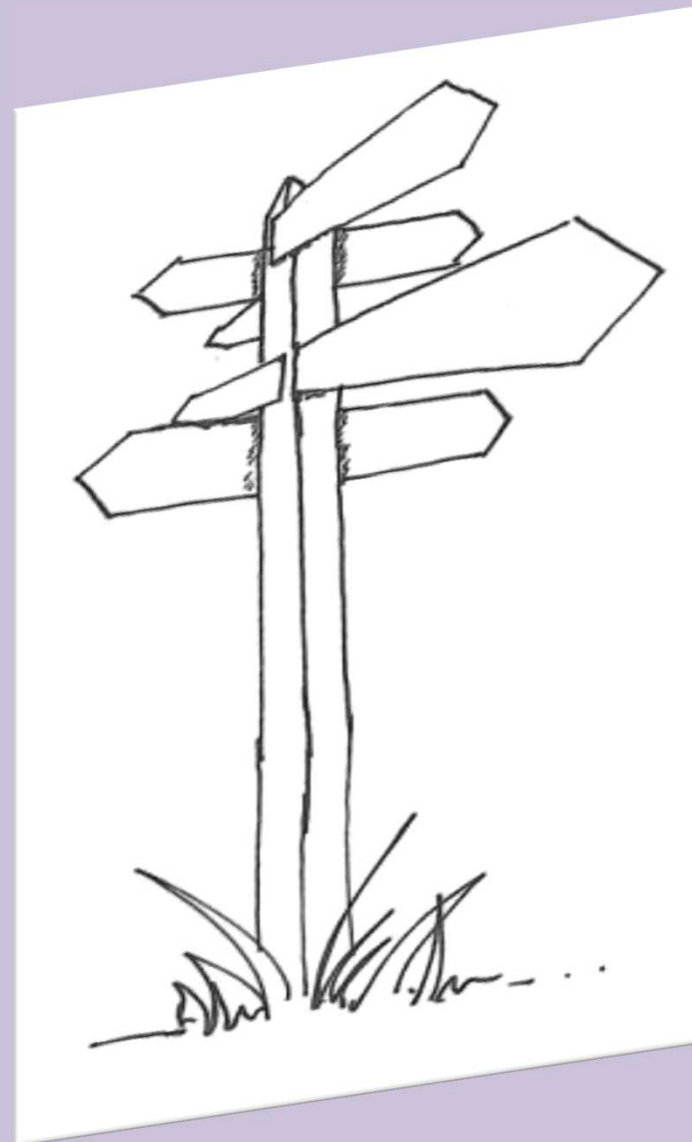
The role of the Community Nurse in HIV

Anna Bamford

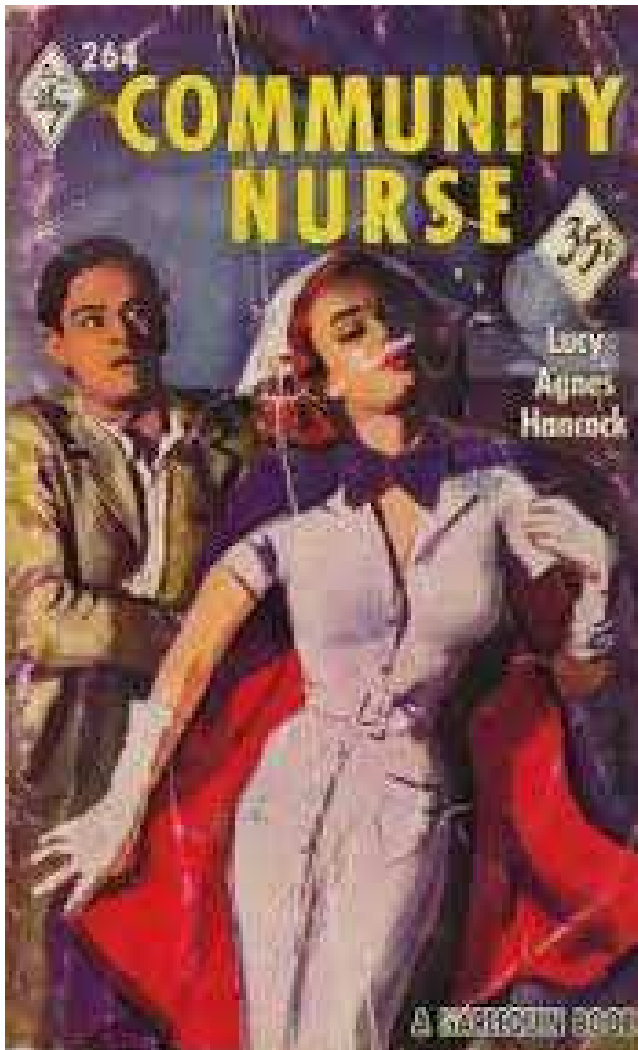
Clinical Service Manager - HIV

Background

- **Different models of Community HIV Nurses**
 - **HIV service specification**
- **BHIVA standards of care**
 - **Where do we fit in?**



The value of the Community HIV Nurse Specialist



- HIV testing
- Assessment and agreeing a **personalised care plan** with the patient
- Supervising or dispensing **dosette boxes**
- **Supporting GPs**
- Nurse-led **drop in**
- **Case management** of patients
- **Discharge planning** from hospital

Value of Home visits



- Assessing patients and **environment**
- Building up **relationship and trust**
- Knowledge and **understanding** of local community
- Advocate for patients about their **health and social care needs**
- Understanding of **risk assessments** in the community
- **Lost to follow up**

Chronic Disease Management

- **Huge agenda** for healthcare and HIV
- **BHIVA standards of care**
- **Contribute to enhancing the quality of life** for patients, by working with them to achieve their own goals



Partnership working



- **House of care**
- **Changing models of community services**
- **Sharing information**
- **Agreeing roles and responsibilities**

Management of HIV positive patients in primary care

- **GP involvement** in a patient's care
- **Case conferences** for complex patients
 - CNS can offer to **attend appointment**
- **Education and training**
- **Correspondence** with GPs

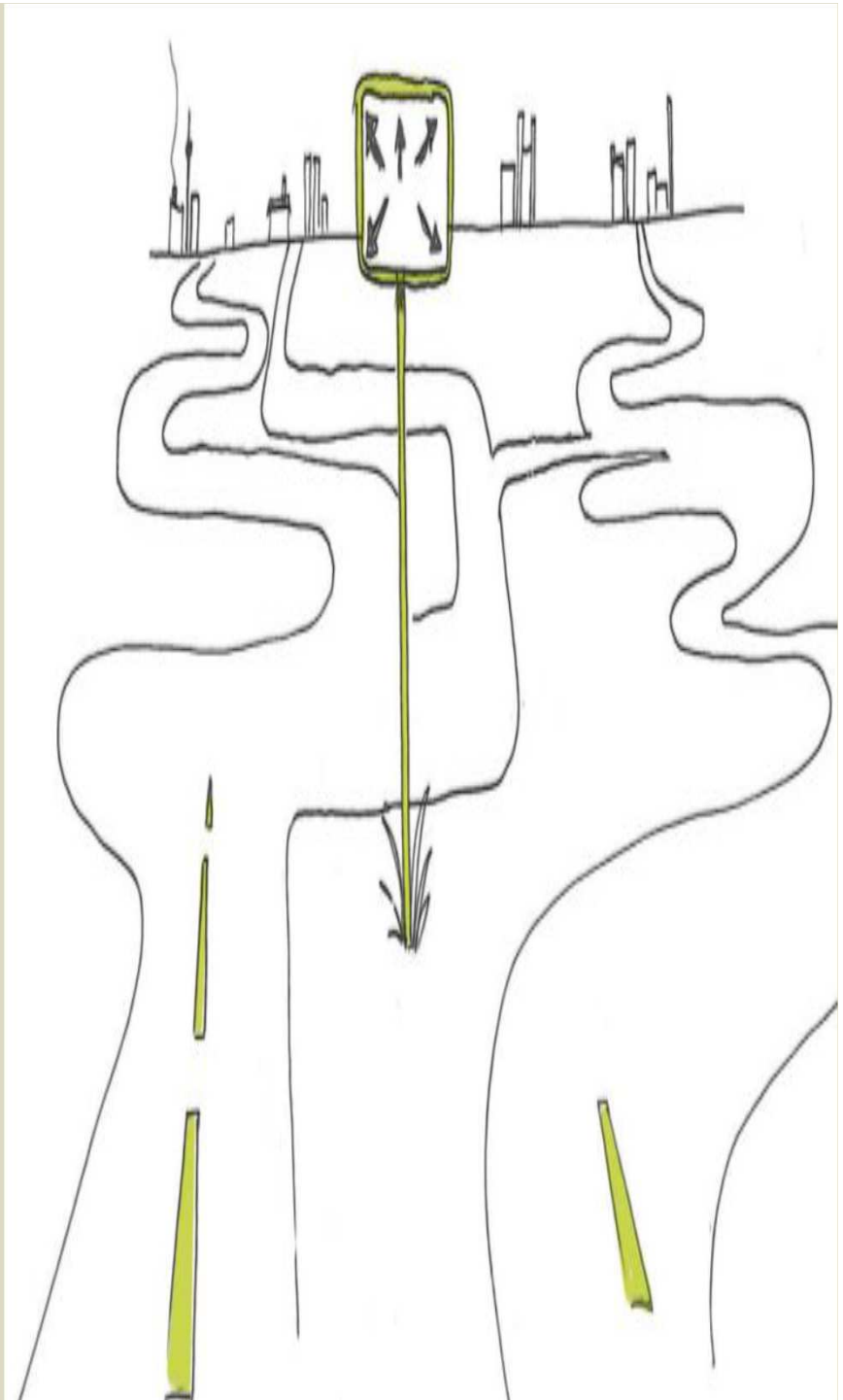


Nursing/care homes

- **Increasing demand** for patients to be admitted
- **Lack of knowledge** and information
- **Staff refusing to care** for patients
- **Universal precautions**
- **Stigma**

Outcomes

- **Preventing** people from dying prematurely
- **Enhancing quality of life** for people with long-term conditions
- Helping people to **recover** from episodes of ill health
- Ensuring people have a **positive experience of care**
- Treating and caring for people in a **safe environment** and protecting them from avoidable harm



Leadership



- **Perception of leaders**
- **New models and change ahead**
- **Cultural changes**
- **Opportunities**

Future models/opportunities

- **Generic vs specialist**
- **Broadening the role of the CNS**
- **Generic mental health knowledge**
- **Robust careplanning**
- **Building relationships**



Case Study: Rob

- Rob: a 50 year old man from London, diagnosed HIV positive 2006
- 2011 – admitted with encephalopathy, confusion, hallucinations and mania
- 2012 – Trouble with law and MHA – CNS support
- Jan 2013 – unconscious at home – grand mal seizures – ITU

Case Study: Rob

- Oct 2013 – Case conference, review by neurologist
- Nov – HIV mental health review
- Admitted – “Best interests” meeting – care home
- DOLS review – continue in secure care home
- CNS role and impact – significant

Question time

“So, having heard my overview of the role of community HIV nurses – **If you were a commissioner for HIV services would you keep them or not?**”

Yes

No



Thank you!

Anna Bamford

Clinical Service Manager – HIV
Community HIV Specialist Service
Brighton & Hove / West Sussex